

**NEW,
UPGRADED
VERSION!**



- **More Programmability!**
- **Extra Volume Range!**
- **Added Applications!**

High Volume Robotic Benchtop Liquid Dispenser

Fluid. Flexible. Fast.

For use in:

Silicon Oil Dispensing

Cell Dispensing

PCR Cleanup

Media Dispensing

Alkyline Lysis

 **Hudson Control Group**

micro 10 – High Volume Robotic Benchtop Liquid Dispenser

The new, upgraded **micro 10™** represents a major advance in liquid dispensing technology that brings many of the benefits of large robotic liquid handlers into the realm of the small benchtop dispenser. Dispensing accurate volumes ranging from 10µL to 2mL per well, the **micro 10** has unique advantages not yet found in other benchtop dispensers.

Fluid

The **micro 10** brings a whole new capability to benchtop liquid dispensing. With full robotic control of the filler head, the **micro 10** automatically adjusts to the height and well-pattern of any SBS-standard microplate from low-profile, 1536-wellplates to tall, 96-well deep-well plates.

Flexible

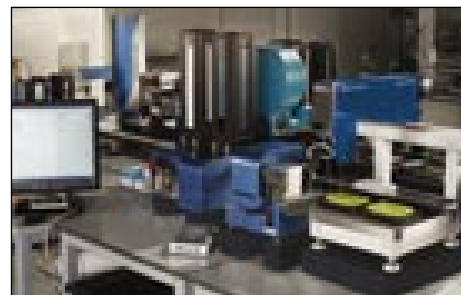
The **micro 10** can be loaded and operated manually, but it is also fully-compatible with robot loading systems such as the PlateCrane EX®. And, because the filler head itself moves, not the plate, the **micro 10** can be used in-line with the LabLinX® high-performance track system for unparalleled throughput and ease of setup.

Fast

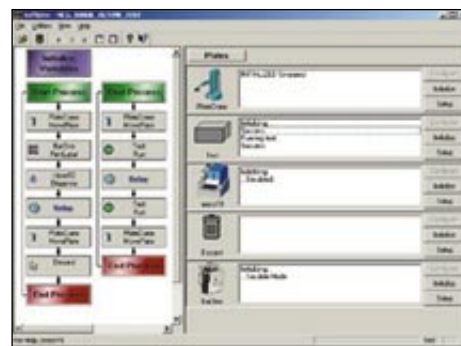
The **micro 10** was designed to meet the fast-changing needs of high throughput screening, cell-based research and genomic/proteomic applications.

Features:

- Never needs re-calibration
- Touch Screen programming on LCD display
- Graphical row selection
- 96-,384- and 1536-well filling
- 10µL to 2mL per well; <3% CV at 10µL
- Fully autoclavable liquid path
- 50% faster than 8-tip dispensers
- Tip Touch capability to touch-off droplets
- AutoPrimes at programmed intervals to prevent drying or clogging
- Self-draining prime trough for repeated priming without overflows
- Stores up to 20 Dispense programs and 10 Priming programs
- Full RS-232 external control capability for easy integration into robot systems
- In-Line operation with track systems or stand-alone manual-loading
- Small (10" x 15") footprint to conserve valuable bench space
- Reversible pump for emptying the fluid path, saving valuable reagents
- All electronics are well away from potential spill areas
- Includes Hudson Control Group's SoftLinX™ software, which provides an easy-to-use interface to coordinate the **micro 10's** operation with other automated instruments
- Optional, programmable 10-way valve for multiple reagents



Easily interfaces with LabLinX and PlateCrane EX as well as other manufacturers' equipment.



SoftLinX software makes it easy to interface the micro 10 with other automated instruments for seamless process control.



Contract Holder
GS-07F-9491S

Hudson Control Group
Customized Solutions in Microplate Automation and Robotics